



2023

SEASON REPORT

SERVANT
T A G E

inspire educate
making exceptional theatre
accessible to everyone
in our community
challenge entertain

Mission STATEMENT

SERVANT STAGE COMPANY EXISTS TO SERVE OUR COMMUNITY WITH
OUTSTANDING MUSICAL AND THEATRICAL EXPERIENCES;
MAKE THE ARTS ACCESSIBLE TO ALL,
ESPECIALLY PEOPLE WITH FINANCIAL OR PHYSICAL LIMITATIONS;
PROVIDE A CREATIVE OUTLET FOR ARTISTS IN OUR COMMUNITY
TO DEVELOP AND SHARE THEIR TALENTS;
CREATE PERFORMANCES THAT
INSPIRE, EDUCATE, CHALLENGE,
AND ENTERTAIN...
AND HAVE FUN WHILE DOING IT!

CORE Values

service

We serve our community by making musical and theatrical experiences easily accessible to everyone and we serve our staff and volunteers by placing the maximum worth on each one and valuing their time and talents. We seek to put others ahead of ourselves.

excellence

We endeavor to put forth our personal and professional best, providing exceptional musical and theatrical experiences, maintaining a standard of excellence, and exceeding expectations.

community engagement

We make the arts accessible to everyone in our community, especially those with physical or financial limitations. We value partnerships with community organizations, schools, churches, and retirement communities. We seek to involve artists in our community by offering a creative outlet.

nurture

We seek to maintain an environment of friendship, fun, and inspiration, where artists in our community can develop their talents. We also offer classes, camps, and training for young artists in our community. We value our staff and volunteers both personally and professionally, and strive to nurture each other's strengths and potential.

enjoyment

We are doing what we love to do, and that is a big part of what drives us to devote our time, talent, and energy into every project. We enjoy bringing enjoyment to others!

tableofcontents

- | | |
|---|--|
| 2 Mission & Core Values | 10 Youth Companies & Drop-In Classes |
| 3 The Year at a Glance | 11 <i>Big Fish</i> |
| 4 A Letter from the Executive Director | 12 <i>Jingle Bell Jukebox</i> |
| 5 2023 Winter Youth Productions | 13 Cabaret Series & Servant Stage Staff |
| 6 <i>The Sound Of Music</i> | 14 Financial Statement |
| 7 <i>I'll Fly Away</i> | 15 Servant Stage Supporters |
| 8 2023 Summer Camps | 17 Board & History |

We're *grateful* for your support that made all of this possible in 2023!

124 in-person performances at 41 different venues



12% increase
44,000+ audience members reached



150 performers in MainStage productions



7 Youth Theatre productions featuring 375 students
39% increase

61 pay-what-you-will classes for 203 students

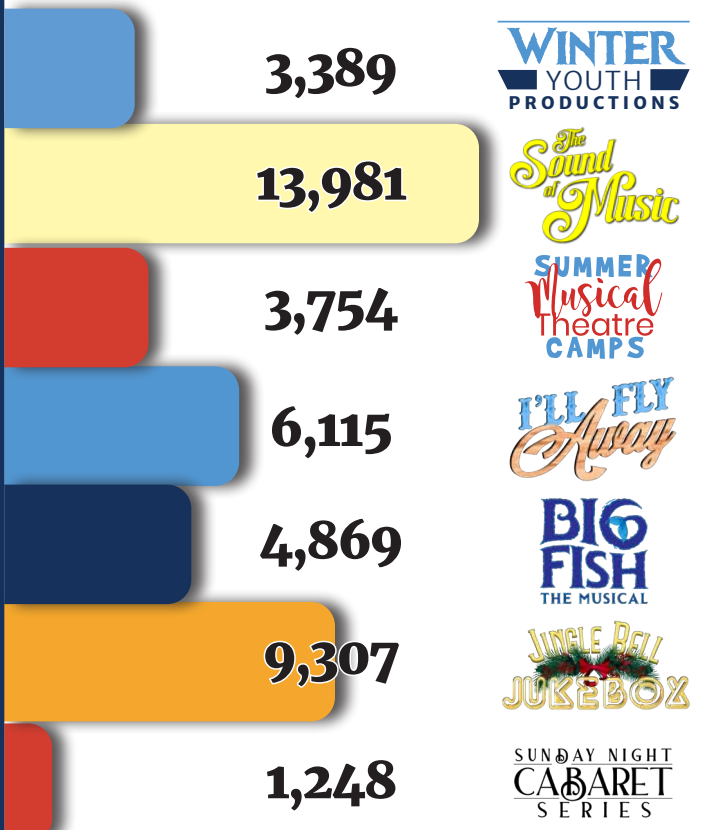


"Everything about this high quality company speaks of the importance of genuine servanthood, a heart for community and a love of the arts; all the while allowing so many people of all ages to learn and experience the joy of acting as they entertain and inspire all those who come to watch!! ... I have seen many performances through the years and have *never been disappointed... ever!!*

- Nancy Yunkin, Facebook Review

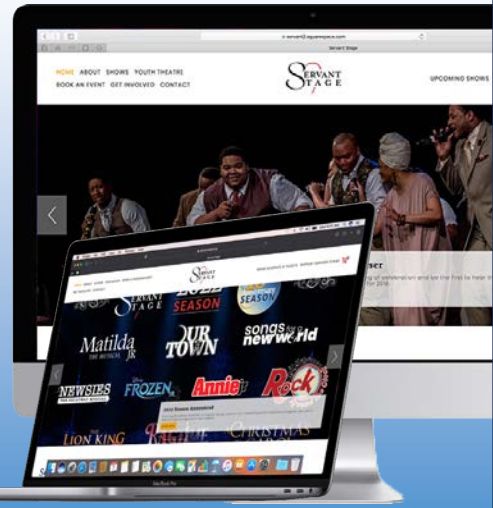
Audience Attendance

By Show



Marketing Reach

Social Media & Website



A letter from the Executive Director.

DEAR SERVANT STAGE COMMUNITY,

Amidst the bustle of all that's happening, constantly looking to the future to keep up with the nonstop growth across every area of Servant Stage, our annual season report brings a welcomed opportunity to pause and reflect as we look back on an incredible year and celebrate the people and productions that made 2023 such a highlight for Servant Stage!

As I look across our remarkable community of artists, teachers, students, families, volunteers, audiences, and supporters, I'm reminded of the words of John Ruskin, the 19th century writer and art critic: "When love and skill work together, expect a masterpiece." Throughout the past year, I've been blessed and humbled to experience this love and skill entwined in so many aspects of our company, bringing masterpieces to the rehearsal room, to the stage, to the classroom, to the audience, and beyond.

ON STAGE:

With a variety of MainStage productions, from large-scale Broadway musicals like *The Sound of Music* and *Big Fish*, to original touring shows like *I'll Fly Away* and *Jingle Bell Jukebox*, our stage has been graced with performances that not only entertained but also served as a source of inspiration and reflection for our audiences. Records were broken, with a new attendance record for *The Sound of Music* (nearly 14,000 people!), and a new record for touring outreach performances with *Jingle Bell Jukebox* (41 performances at 27 venues!). We are so grateful to our cast and crews who reflect the union of love and skill with their hard work, compassion, expertise, patience, and grace!

IN THE CLASSROOM:

Our theatre education program has marked an immensely successful year, including over 300 students in youth productions of *The Lion King Jr*, *Godspell*, *James and the Giant Peach Jr*, *The Little Mermaid Jr*, *Cinderella: Youth Edition*, and *Shrek Jr*. Additionally, our ever-growing Youth Company programs and weekly Pay-What-You-Will theatre classes were attended by more than 250 students between February and November. Our incredible team of instructors (over 70 of them in 2023!) exemplified love and skill as they instilled in our students the importance of serving others through their talents. This emphasis on service and excellence has cultivated an atmosphere of collaboration, empathy, and encouragement, allowing budding artists to develop their abilities in a supportive and uplifting environment!

IN THE COMMUNITY:

Through outreach programs, partnerships with local organizations and schools, and our Pay-What-You-Will model aimed at inclusivity and accessibility, we've continued to increase our impact across the community, bringing 124 performances to parks, schools, retirement homes, churches, and other venues across Lancaster County. This dedication to service has allowed us to reach new audiences and create meaningful connections with individuals from all walks of life. With a mission to reach everyone, our survey results show that we are successfully reaching a much wider audience than typical theatre demographics. We are so thankful for our wonderful audiences and for the hundreds of volunteers that serve on our welcoming front-of-house teams to make all of this possible.

FINANCIAL SUPPORT AND STEWARDSHIP:

The support of our donors, sponsors, and community partners has been instrumental in our ability to expand our reach and impact. Your generosity has enabled us to blend our love for the arts with a love for our community, and through skillful management of resources, ensure the sustainability of Servant Stage's mission and community-focused programs.

For all of this, we say "Thank you!" As the only Pay-What-You-Will theatre in the region, none of what we do is possible without you! So thank you for spreading the word to your friends and families! Thank you for supporting Servant Stage with your generosity and friendship, and thank you for allowing us to continue to grow and expand our impact on the community! Together, as we continue to blend love and skill, we look forward to creating more extraordinary masterpieces that are accessible for all of our community.

Thank you for playing your role with Servant Stage!



Johnathan Bauer
Executive Director

Disney
**THE
LION KING**



January 27-29



February 3-5

"My daughter has participated in two Servant Stage Company shows. She has had amazing experiences. Not only has she learned a great deal about musical theater but she has made some lifelong friendships. This is a very professional organization, with loving adults who invest in your children."

Julie H.

GODSPELL



The Sound of Music

15
piece live orchestra

61
cast members

13,981
in-person attendees

JUNE 2-18

16 live performances at
Lancaster Bible College

One of the most beloved musicals of all time and our most-requested show! *The Sound of Music* won the hearts of audiences worldwide upon its original release in 1965, and captured nearly 14,000 more over the course of three weekends at Lancaster Bible College in June.

"The Sound of Music was fantastic! Absolutely beautiful singing and talented acting. I appreciate so much that we get to experience this level of acting and can afford to go."

Carla R.
Google Review

"The production of *The Sound of Music* was phenomenal! The performance was so professional and we loved that it was affordable for our entire family! We will definitely be seeing other shows in the future."

Susan M.
Google Review

"Fantastic show! This was our first time seeing a Servant Stage production. We saw *The Sound of Music* and absolutely loved it. The music was spot on and every single singer had such talent. The acting was top notch and they deserve all the recognition! I brought my 4 and 3 year old girls for the show and they were mesmerized the entire time. We will be going again, for sure!!"

Bri N.
Google Review



21 performances across Lancaster County

6,115+ attendees

I'LL FLY AWAY



"This was an amazing performance!! I enjoyed it immensely!! It was such great acting and their singing voices were SO GOOD. It was SUCH a talented group of kids."

Judi G.

JULY 12 - AUGUST 13

Servant Stage's audience-favorite original revue returned to Lancaster this summer! *I'll Fly Away* featured a live folk band, stunning vocalists, and beautiful renditions of some of the most famous and inspirational songs ever written! With toe-tapping arrangements of old-time favorites, classic hymns, and more, this original tribute to Gospel and Bluegrass music performed in parks, churches, and retirement communities across Lancaster County and beyond!



"Once again we thoroughly enjoyed a Servant stage production. *I'll Fly Away* was fun, entertaining, uplifting and done very well. Even though it was the final production all the entertainers looked fresh and enthusiastic. Thanks for including old hymns along with the bluegrass music. Very well done."

Janel D.
5-Star Google Review



"A friend and I attended *I'll Fly Away* and were amazed at the show's production, beautiful voices, great musicians and we loved the songs that were included. Keep up the wonderful shows."

Donna H.
5-Star Google Review



"*I'll Fly Away* was fantastic. We really enjoyed it. Servant Stage performances are top notch ... the performances are excellent and gives everyone an opportunity to see outstanding theatre performances and donate whatever you can afford. Looking forward to the next performance."

Linda E.
5-Star Google Review



Servant Stage
YOUTH THEATRE

SUMMER Musical Theatre CAMPS

June 26 - July 1

Roald Dahl's
**James
and the
Giant
Peach** JR.



July 10-15

Disney
**THE LITTLE
MERMAID** JR



"Little Mermaid was so well done. The young actors knew their lines, blocking, music, and they acted with confidence. The singers had fabulous voices! It's hard to believe they put this together in a week. That shows A LOT of hard work."

Margaret W.



194 students
ages 8-18

3,700+
attendance

8 community
performances

July 17-22

RODGERS & HAMMERSTEIN'S CINDERELLA YOUTH EDITION

July 31 - August 5

SHREK THE MUSICAL JR.



"Our 10-year-old daughter had her first theater experience with Servant Stage's summer camp. She loved it and learned so much from the excellent and encouraging staff. Highly recommend their summer camp!"

Bethany N.



SERVANT STAGE Youth Companies



May-August

After the success of our Teen Company & Apprentice Company, we were thrilled to introduce Junior Company, offering yet another level of instruction to a younger class of students. A total of forty students across all three companies received weekly classes in acting, singing, and dancing from local and industry professionals from May thru August, culminating in a showcase performance for the public on August 22, 2022.

49 students
ages 12-19

21 theatre instructors



MONDAY NIGHT DROP-IN CLASSES

February - November

61 classes offered

203 students

27 theatre instructors

Our Monday Night Drop-In Classes offered pay-what-you-will training each week in various styles of dance, voice, acting, stagecraft, and more from a wide variety of local theatre professionals!

"Maggie loved the class! She would have stayed all night if she was able to! She found it helpful and encouraging and a push outside of her comfort zone! She would love to attend more acting, vocal and dance classes in the near future! Thank you!"
- Bridget L



BIG FISH THE MUSICAL

12 performances at Warwick Senior High School

46 performers

4,800+ in-person attendees

SEPTEMBER 8-24

Based on the book and movie of the same name, *Big Fish* is a colorful and imaginative Broadway spectacle about the power of stories and the love of a family. Thousands of audience members were moved to laughter and tears through this heartwarming story over the course of three weekends of performances at Warwick High School.

"WOW is all we can say! Having been season subscribers at other theaters for decades, this will certainly not be a one-time visit to Servant Stage. We could not have been more impressed with the cast of characters and the production as a whole. What an inspiring mission this organization has using a pay what you will format. Kudos all around!"

Ed G.
5-Star Google Review

"Remarkable Performance! Was impressed from beginning to end! This is a must see!!!! I can't stress enough how much I enjoyed this musical."

Kelly
5-Star Google Review

"It was amazing in every way. The vocals, the dancing, the costumes ... I could go on and on. The plot line was so engaging. I had tears in my eyes at the end. Well done, Servant Stage!"

Margie G.
Facebook Review

"Absolutely incredible show!!! I've never been disappointed with any of the Servant Stage productions. I go all the time!!"

Ann M.
Facebook Review



42 live performances across
Lancaster County and beyond!

46
Performers

9,307+
in-person attendees

JINGLE BELL JUKEBOX

November 10 – December 17

With a cast of six featured singers, high-energy teen dancers, a kids ensemble, and a live five-piece band, we were rocking around the Christmas tree at dozens of churches, schools, retirement homes, and other performance venues this season! With a lengthy setlist of medleys and mash-ups that incorporated more than three dozen classic holiday songs, *Jingle Bell Jukebox* traced the magic through nostalgic Christmas traditions all the way to its source – the miracle of the Nativity!

"Fantastic Christmas show with beautiful voices and great dancers. Loved seeing the little children on the stage. Left with a wonderful feeling of Christmas blessings!"

Marion P.
5-Star Google Review

"We loved Jingle Bell Jukebox and highly recommend going to see it!! They sang all the classic Christmas songs and were a lot of fun to watch and put us in the Christmas spirit all the more!! Well done, Servant Stage!!!!"

Christy R.
5-Star Google Review



"The lead singers take to the stage after all else in a small but powerful collection of choral glory, including a truly remarkable arrangement and performance of 'O Holy Night'... that one carol itself would be worth the price of any admission. It needs to be heard and appreciated."

Marakay Rogers
Writer for Broadway World



SUNDAY NIGHT CABARET SERIES



REJI WOODS
 KRISTEN BREWER
 RAY HILTON
 KYLIE JO SMITH
 JACOB & CASSANDRA CUMMINGS
 GEOFF MORGAN
 MATTHEW & BRIANNA WILHELM
 MAGIC & WONDER DINNER THEATER

SERVANT STAGE *Staff*



Johnathan Bauer
EXECUTIVE DIRECTOR



Tyler Hoover
MANAGING DIRECTOR



Amberly Barker
EDUCATION PROGRAM
MANAGER



Jim Bauer
BOOKKEEPING &
DATABASE ADMINISTRATOR



Jenny Norgaard
COMMUNICATIONS
MANAGER



Chad Young
COMPANY & PRODUCTION
MANAGER



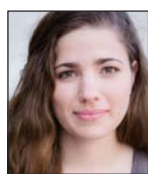
Andrew Zahn
DEVELOPMENT &
COMMUNITY RELATIONS



Britt Jarkowsky
PROJECT MANAGER



Stephanie Noll
FRONT-OF-HOUSE
MANAGER



Lauren Schaeffer
PROJECT MANAGER



Gretchen Webb
DIGITAL MARKETING
MANAGER



Elizabeth Rickard
DEVELOPMENT ASSISTANT



Liana Minnich
ADMINISTRATIVE
ASSISTANT

Financial STATEMENT

Servant Stage Company is carefully managed and has *never run a deficit since its creation, with a sustainable vision for the future to serve our community for generations to come.*

Our fiscal year closed on Dec. 31, 2023 with \$703,028 in assets - \$43,396 in equipment and \$659,632 in cash, including \$174,663 in restricted funds (building fund - \$84,638; equipment fund - \$24,000; prepaid sponsorships for 2024 season - \$15,200; and prepaid tuition for 2024 camps - \$50,825).

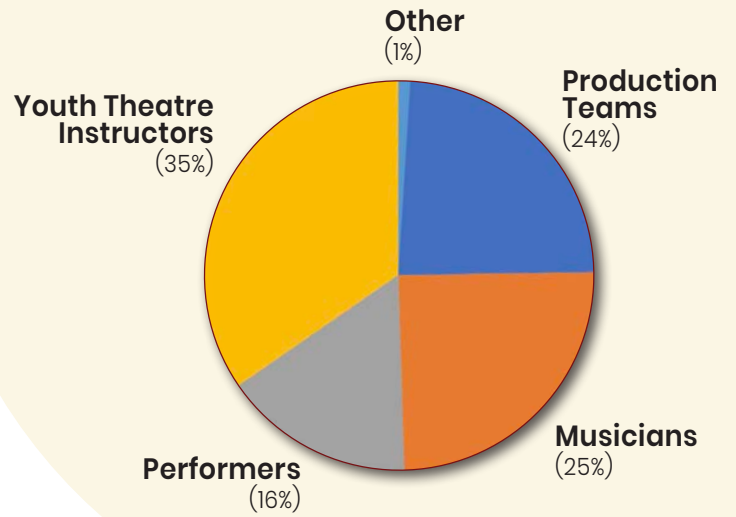
Operational Revenue

Individual Contributions	\$595,950
Business/Organization Contributions ..	\$18,950
Sponsorship Contributions.....	\$31,175
Education	\$120,855
Concessions & Merchandise	\$42,251
Grants	\$83,097
Other	\$29,194
Total Revenue.....	\$922,401

Operational Expenses

Salaries.....	\$306,176
Independent Contractors.....	\$163,493
Occupancy	\$120,540
Marketing & Fundraising.....	\$46,118
Production Supplies.....	\$107,835
General Expenses	\$22,090
Total Expenses	\$766,252

Though Servant Stage relies heavily on volunteers, whenever possible our goal is to offer stipends. In 2023, Servant Stage was able to offer **\$163,493 in stipends to 163 independent contractors**



Thank you for playing your part in making the mission of Servant Stage possible and fueling the growth that we saw in the past year! As you know, our mission is to make the arts accessible to everyone, especially those with physical or financial limitations while creating a safe, fun, and nurturing environment for both professionals and the hundreds of students in our youth theater programs. In alignment with this mission, we are looking forward to the expansion of our educational programming, creating opportunities for the hundreds of students still on waitlists to get involved with our Youth Theatre program. We are also actively working toward hiring additional staff to support all that's happening and make sure that the experience for everyone involved never diminishes. As our impact expands, our need for a space all our own has continued to grow, and we continue to seek the best spot for our offices, rehearsals, and theater education classrooms. (We will be sure to update you with any developments! Stay tuned!)

No matter where we are - whether in a school, church, theatre, or our own space - our commitment is to retain the heart of service to all in our community and those who attend our shows. When you support Servant Stage, you can trust that we will uphold this mission. Thank you for your encouragement and for supporting Servant Stage as we navigate our growth.



Andrew Zahn
Development &
Community Relations

SERVANT STAGE Supporters

January - December 2023

\$10,000+



Anonymous (1)
Lois Morgan
Marilyn Rowan
Shirley M. Rust
Richard Vanderberg

\$5,000-\$9,999

Anonymous (2)
The Donald B. & Dorothy L. Stabler Foundation

Bruce & Carole Eberwein
Ferree Foundation
Wayne & Robin Headman

Evelyn Hess
Walt & Sarah Styer

\$1,000-\$4,999



Anonymous (4)
J. Robert Arthur
Chris & Rachel Backert
Austin & Kate Baker
Ed & Jackie Balderston
Eileen & Jim Beccone
Dave & Paulie Bird
Diane Brown
Nathan Buse
Glenn & Beth Cozzone
Howard & Mary Jeanne Dearborn

The Foundation for Enhancing Communities
Nicholas & Miriam Frey
Jane Gardner
Calvin & Janet High
Rick & Marcy High
Paul & Sylvia Hollinger
Home Instead Senior Care
Paul & Janie Hutton
Dave & Nicole Julian
Gregg & Susan Kearney
Mike Kukich

Sundae Lausch
Bob & Judy Leaman
Tiffany Lentz
Elizabeth Liddle
Joanna Lucas
Gladys S. Martin
Jeanne Valerie Mast
Mardel Mellinger
Larry Mentzer
Norgaard Family
Nathalie Norr & Edward Cohen

Jim & Barb Orsag
Larry & Darlene Pals
Thomas & Joyce Parker
Dr. Roger B. Petersen
Greg & Courtney Rumsey
Linda A. Scott
Marvin & Linda Stouffer
Kathy Unangst
Wayne & Ruth West
Earl Ziegler

\$500-999



Anonymous (10)
Michael Albert
Don Aldrich
Chris & Megan Ament
The Ashland Foundation
Jon & Cindi Balson
Cecilia & Chad Bardone
Judy Bowlby
Bob & Connie Brinton
Roy & Ada Burkhart
Adorers of the Blood of Christ
Russ & Bonnie Corle
Paul & Shannon Cortese

Ken & Deb Cushing
Stephanie Deppen
Mary Ellen Donat
Richard Fogie
Jen & Jon Frank
Jerel & Leah Frey
John & Ann Gibbel
David & Elizabeth Givens
Michael Grabauskas
Caleb Heckman
David & Nancy Heintzelman
Bill & Doris Helie
Charlie & Marion Hentz

Carole & Marty Hermes
Ed & Sylvia Houser
Louetta Hurst
Dale & Christine Johnson
Dennis & Beth Jordan
Elam King
Lehman Insurance Agency, Inc.
Keith & Jennifer Mader
Carol Major
Henri & Kristina McVey
Kristin Messick
Carl & Marian Metzler

Garry & Rachel Miller
Lloyd & Mary Ann Miller
Keith & Deborah Mink
Rachel A. Mundis
Nancy Jean & Michael Newcomer
Pampered Chef
Ken & Donna Patrick
Lloyd & Claudia Pickell
Col. & Mrs. Paul Reid
Rose Rineer
Charles & Mary Rost
Frances E. Sattazahn

SERVANT STAGE *Supporters*

\$500-999

Justine & Randy Schumacher
Shawn & Wendy Serfass
Scott & Nancy Silverstein
Barry & Lois Sine

Bill & Rosalie Starr
Sheila & George Violand
Ellen Vogt
Shirley Wenger

Ivan & Nancy Wenger
June & Stu Wesbury
Ann Willets
Al & Wendy Williams

Randy & Margaret Williams
Arlene & Randall Zerr
Ruth S. Zimmerman

\$250-499

Anonymous (13)
Jim & Betsy Allwein
Pat & John Beamenderfer
Ernie & Liane Beardsley
Perry & Carol Beiler
Elizabeth L. Bicking
Linda Blessing
Flere & Paul Bomba
John & Linda Bomberger
Louis Brancaleone
Barbara & Marlin Brandt
Paul W. & Evelyn M. Brubaker
Nancy Butler
Marilyn D. Carrion
Jesse & Krista Casler
Mr. & Mrs. John & Harriet Castro
Cedar Meadows Farm
John L. Clark
Diana Collins
Jane Cone
Joseph & Elene Contegiacomo
Mark & Kristin Cote
Custom Florals
Sylvia & William DeLong III
Kevin & Mary Dolan
John & Janet Dorfler
Bill & Karen Drury
Bart & Mary Dunlap
Harold & Susan Eby
Marie Edwards

Beverly England
Laurel & Andrew Favilla
Konrad & Lucinda Finck
Dave & Shirley Frankenfield
Robert & Shirley Garrett
Carolyn Geiger
Don & Laura Geiter
Nancy & Ken George
Joshua Glacken & Elizabeth Rickard
Ceci Good
J. Hagelgans & G. Zorian
Wally & Lois Hansen
Ron & Evelyn Hartmann
Christina Hausner
Daureen Heffner
Yvonne & Warren Herbst
David & Nicola Herring
Hank & Diane Herrmann
Eileen Hess
Brad & Tammy Higgins
Doreen Hochstetler
Warren & Connie Hoffman
Sherlyn Horst
Ken & Wendy Huber
George & Jean Hurst
Jay R. Hurst
Doreen Jacoby
Carla Johnson
Johnson & Johnson

Phyllis Jones
Marilyn Keller
Dorothy & Michael Klase
Lloyd & Mary Lois Kreider
Tamara & Joseph Lamoureux
Jim & Elaine Landis
Miriam Leaman
Bryan & Karah Leaman
Keith & Ernestine Lehman
Ceylon & Karen Leitzel
John & Julie Lewis
Tom & Nancy Loane
Jerry & Cindy Lorson
Jeff & Anne Martin
Mel & Shirley Martin
Ava Lee Martin
Clark McSparren Jr. MD
Glenn & Kathy Melinger
Carol Miller
Anne Montgomery
Earl Moyer
Donald & Ilene Neaves
Robert Petrosky & Cathy Sharp
Stephen & Jeanne Phillips
Kara & Moon Phongxaysanith
Robert Power
Robert & Sue Radocy
Karyn & William Regitz
Renovation Sells
Shaun & Kayla Ressler

Wayne & Melissa Reynolds
Drs. Irwin & Susan Richman
Bonnie Rohrer
Fran & Julie Rosario
David & Jeanette Ryan
Eric Rydland
Terry & Carol Sayer
Tracy Schmidt
Ed & Annette Schopf
Barbara Sensenig
Don & Siddy Serfass
Rosanne Sietins
Wilma Simione
Muriel Slenker
Pat Smedley & Bill Haynes
Charles & Kathy Smith
John E. Smucker II
David & Sara Stackhouse
Curtis & Terry Stumpf
Daryl & Laura Summerson
Bonnie Tennis
David & Anne Marie Teply
Robert & Marilyn Tyson
Linda Wanaselja
John & Yvonne Weaver
Tom & Jennifer Weise
Dennis & Judy Wertz
Kaare & Turid Wick
Dallas & Diane Wolgemuth

We apologize if we inadvertently omitted your name from this list, or included your name if you wished to be anonymous. Please email johnathan@servantstage.org or call (717) 455-0255 and we will make any necessary corrections.

At a young age I knew performing was something that I wanted to pursue, and Servant Stage has given me incredible opportunities to continue this pursuit.

I participated in my first camp at the age of 10, and have continued to grow with Servant Stage Company as they have invested in me as a performer, and a person. I love how, through the youth programs and in the MainStage shows, the directors draw out the best in you. And, believe me, I have grown in so many ways that I could never have imagined when I was 10! I feel like I have made a family with the cast, crew, and leadership of Servant Stage, and those relationships and experiences will stay with me forever!



Reagan Connell
Servant Stage Performer



SERVANT STAGE Board Of Directors



Johnathan Bauer



Rebecca Bauer



Doug Myer



Adam Norgaard



Jenny Norgaard



Lynette Waller

THE HISTORY OF *Servant Stage*

2011-12

songs & scenes from gilbert & sullivan

some enchanted evening: classic love songs

yankee doodle dandy: music of america

do you hear the people sing: songs of broadway

Servant Stage started with the simple mission to serve our community with the performing arts.

Beginning unofficially in 2011, Johnathan and Rebecca Bauer would get groups of friends together to rehearse and put on free performances for local retirement homes.

great american songbook

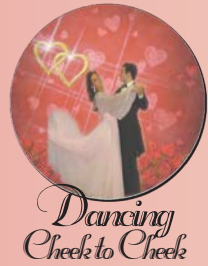
amazing grace: songs of faith

can you feel the love tonight: music of disney

2013

2014

2014 marked our first full season with 5 productions and 55 performances.



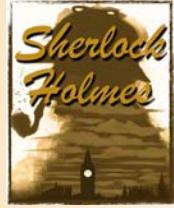
The 2015 season included our first Broadway musical, as well as the original production of our recurring audience favorite, A Christmas Carol.



2015

2016

2016 saw the inception of Servant Stage's Youth Theatre program with our first summer camp, Godspell Jr!



THE HISTORY OF *Servant Stage*



2017 brought five mainstage shows and the addition of a second summer theatre camp. With audience favorites like *The Civil War* and *Around the World in 80 Days*, attendance grew by 72%.

LITTLE WOMEN
the Broadway musical

THE CIVIL WAR

WONK!

BYE BYE BIRDIE

Sing Sing SWING

AROUND THE WORLD IN 80 DAYS

OLD-TIME GOSPEL RADIO Christmas

2017

2018

The Marvelous WONDERETTES

JUKEBOX Saturday Night!

INTO THE WOODS JR.

Seussical Jr.

GODSPELL JR.

I'LL FLY AWAY
BACKWOODS BLUEGRASS BAND

TITANIC THE MUSICAL

A CHRISTMAS CAROL

Our Youth Theatre season expanded further in 2018, adding a third summer camp and an all-teen mainstage revue, *Jukebox Saturday Night!* This season also featured the record-breaking productions *Titanic* (largest cast & orchestra) and *I'll Fly Away* (largest attended show to date)



We experienced significant growth in 2019. Our staff expanded to five full-time and three part-time team members and once again broke records in nearly every category, including audience attendance, number of performances, and cast, crew, and volunteers.

A MILLION DREAMS
SONGS OF INSPIRATION

Jump, Jive, and JUKEBOX

MY Fair LADY

GETTING TO KNOW RODGERS & HAMMERSTEIN'S OKLAHOMA!

ONCE ON THIS ISLAND JR.

Disney's HIGH SCHOOL MUSICAL JR.

Let Freedom Ring
Music of America

THE MUSIC MAN

Joy TO THE WORLD

2019

2020

Disney FROZEN JR.

DON'T ROCK THE JUKEBOX

THE ONLINE CONSERVATORY

Servant Stage Living Room concertseries

S APPCO

S TEENCO

A CHRISTMAS CAROL

Despite significant challenges due to COVID-19, Servant Stage saw continued growth in our youth education programs with the introduction of our Teen & Apprentice Companies and a massive leap in our online audience and engagement through our *Living Room Concert Series*.



THE HISTORY OF *Servant Stage*



2021 brought revivals of several audience-favorite productions, as well as our first ever staged reading of a new musical! We also established a home base at Lancaster County Christian School, providing a hub for our offices, classes, and rehearsals!

THE CIVIL WAR

ONCE UPON A TIME

Daddy Long Legs

DON'T ROCK THE JUKEBOX

PRODIGAL A MUSICAL ALLEGORY

Getting to Know Once Upon A Mattress

Disney Aladdin

Disney MOANA JR.

Disney HIGH SCHOOL MUSICAL 2

OLD TIME GOSPEL RADIO HOUR

AMAZING GRACE A NEW HEBREW MUSICAL

Joy TO THE WORLD

2021

2022

Matilda THE MUSICAL JR.

OUR TOWN

LIFT EVRY VOICE

songs for a new world

NEWSIES THE BROADWAY MUSICAL

Disney FROZEN JR.

Annie jr.

THE LION KING JR.

Rock Around The Clock

RAGTIME THE MUSICAL

A CHRISTMAS CAROL

Our first year fully returning to in-person performances brought new additions to our educational offering, including two youth winter productions, weekly drop-in classes, and a touring educational production to schools, as well as several new full-time team members!



2023 marked the beginning of our Sunday Night Cabaret Series, and featured our highest-attended show ever, *The Sound Of Music*! This year also saw the return of the original revue show, *I'll Fly Away*, and a new Christmas revue that played a record 42 performances!

Disney THE LION KING JR.

GODSPELL

SUNDAY NIGHT CABARET SERIES

The Sound of Music

Ronald Dahl's James and the Giant Peach JR.

Disney THE LITTLE MERMAID JR.

RODGERS & HAMMERSTEIN'S CINDERELLA YOUTH EDITION

SHREK THE MUSICAL JR.

I'LL FLY AWAY

BIG FISH THE MUSICAL

JINGLE BELL JUKEBOX

2023

2024

ANASTASIA THE MUSICAL YOUTH EDITION

Seussical

I'LL FLY AWAY

Fiddler on the Roof

LIFT EVRY VOICE

Disney NEWSIES JR.

THE WIZARD OF OZ Young Performers Edition

Disney BEAUTY AND THE BEAST JR.

The Sound of Music YOUTH EDITION

SUNDAY NIGHT CABARET SERIES

TUCK EVERLASTING

Christmas Crooners

The Marvelous Wonderettes

Our educational wing continues to grow, with added productions and programs to accommodate demand! 2024 will also see the return of several audience-favorite shows, as well as the oft-requested *Fiddler On The Roof* and *Christmas Crooners*, a brand new original revue!





INSPIRE • EDUCATE • CHALLENGE • ENTERTAIN
SERVANTSTAGE.ORG | 717.455.0255