

2021 SEASON REPORT

APPLAUSE

ON AIR

SERVANT
STAGE

inspire educate
making exceptional theatre
accessible to everyone
in our community
challenge entertain

Mission STATEMENT

**SERVANT STAGE COMPANY EXISTS TO SERVE OUR COMMUNITY WITH
OUTSTANDING MUSICAL AND THEATRICAL EXPERIENCES;
MAKE THE ARTS ACCESSIBLE TO ALL,
ESPECIALLY PEOPLE WITH FINANCIAL OR PHYSICAL LIMITATIONS;
PROVIDE A CREATIVE OUTLET FOR ARTISTS IN OUR COMMUNITY
TO DEVELOP AND SHARE THEIR TALENTS;
CREATE PERFORMANCES THAT
INSPIRE, EDUCATE, CHALLENGE,
AND ENTERTAIN...
AND HAVE FUN WHILE DOING IT!**

CORE Values

service

We serve our community by making musical and theatrical experiences easily accessible to everyone and we serve our staff and volunteers by placing the maximum worth on each one and valuing their time and talents. We seek to put others ahead of ourselves.

excellence

We endeavor to put forth our personal and professional best, providing exceptional musical and theatrical experiences, maintaining a standard of excellence, and exceeding expectations.

community engagement

We make the arts accessible to everyone in our community, especially those with physical or financial limitations. We value partnerships with community organizations, schools, churches, and retirement communities. We seek to involve artists in our community by offering a creative outlet.

nurture

We seek to maintain an environment of friendship, fun, and inspiration, where artists in our community can develop their talents. We also offer classes, camps, and training for young artists in our community. We value our staff and volunteers both personally and professionally, and strive to nurture each other's strengths and potential.

enjoyment

We are doing what we love to do, and that is a big part of what drives us to devote our time, talent, and energy into every project. We enjoy bringing enjoyment to others!

table of contents

- | | |
|---|--|
| 2 Mission & Core Values | 10 2021 Summer Camps |
| 3 The Year at a Glance | 11 Monday Night Classes, TeenCo, AppCo |
| 4 A Letter from the Executive Director | 12 <i>Amazing Grace</i> |
| 5 A Letter from the Artistic Director | 13 <i>Joy To The World</i> |
| 6 <i>Daddy Long Legs</i> | 14 <i>The Civil War, Once Upon A Time</i> |
| 7 <i>Prodigal</i> | 15 Financial Statement |
| 8 <i>Don't Rock The Jukebox</i> | 16 Servant Stage Supporters |
| 9 <i>Old-Time Gospel Radio Hour</i> | 18 History of Servant Stage |

2021 at a glance

Moved Into **A New Home Base** at Lancaster County Christian School providing a home for our rehearsals, classes, camps, storage, and offices all in one location.

Reached **23,000+** people with in-person performances and *thousands more* with online productions!

Presented **88** in-person performances bringing live theatre to **30 different venues** in Lancaster County (and beyond!)

Produced **7** Youth Theatre Shows giving **250 students** opportunities to learn and grow in an uplifting environment.

Offered **33** pay-what-you-will theatre classes allowing **109 students** to take classes from local professionals at whatever cost they could afford.



★★★★★
5/5 Rating

based on 122 Facebook, Google, and TripAdvisor Reviews

WEBSITE & SOCIAL MEDIA ENGAGEMENT



2021 BROADWAY WORLD AWARDS

BEST STREAMING MUSICAL
The Civil War

14,100
avg. monthly web page views

12,400
avg. monthly reach on Facebook

8,200
avg. monthly Instagram reach

3,344
avg. monthly interactions on Facebook videos (not incl. regular posts)

625+
new Facebook followers

121
new YouTube subscribers



22%
increase

61%
increase



2021 SEASON SPONSOR



The Voice of Christian Radio

A letter from the **Executive Director.**

TO OUR DEAR SUPPORTERS, AUDIENCES, ARTISTS, VOLUNTEERS, AND COMMUNITY...

After a year of virtual performances and not being able to see our amazing Servant Stage family in person, I am so very thankful for all of the shared experiences we were able to enjoy together in 2021. Though we all continue to face challenges as we navigate through this pandemic together, we are grateful for another impactful year of serving our community, and looking forward to celebrating our 10th Anniversary Season in the year ahead!

Ten years ago, Servant Stage started with the belief that the arts are at their best when everyone has access to them and when the arts are bringing communities together. We were built on a foundation of service to our community, and the idea that "Servant Stage is Us," ALL of us working together to serve our community! It has been a joy to see this big, wide, diverse Servant Stage family grow over the past ten years as we serve together! Whether you're part of the audience, part of the orchestra, performing on stage, welcoming at the front door, young, old, rich, poor, serving with your time, or giving generously financially, you are what makes this unique mission possible!

We believe this mission is needed more than ever, as we look around our country and see communities being increasingly divided by fear, prejudice, and differences. We're encouraged to see how Servant Stage's mission has been able to bring people of all different backgrounds together for shared experiences through the arts. Our Pay-What-You-Will model and touring outreach performances across the community allow Servant Stage to reach an increasingly diverse audience, impacting a broader demographic than most theaters.

It is a beautiful and powerful thing to see how Servant Stage continues to bring people from all walks of life together to be inspired, educated, challenged, and entertained; to share some laughter, imagination, and creativity together; and to remember the things that unite us.

Thanks to your support and the special part you play, Servant Stage has been going out into our community and bringing people together for ten years now! Our 10th Anniversary Season will be our biggest and most exciting yet, with epic Broadway productions, classic plays, inspirational musicals, and more classes, camps, and youth theatre opportunities for students than ever! It is truly unique that we are able to offer this to EVERYONE in our community!

I am so grateful for each one of you that plays a part in this mission! All of the achievements outlined in this report would not be possible without the leadership of our board, the devotion and excellence of our staff, the creativity and talents of our artists, the love and sacrifice of our volunteers, and the sustained generosity of our community! It is because of the contributions of each and every one of us that Servant Stage is able to continue having such a dramatic impact on all stages of life in our community!

Thank you for being a part of the Servant Stage family!



Johnathan Bauer
Executive Director

SERVANT STAGE BOARD OF DIRECTORS

Johnathan Bauer, Rebecca Bauer, Dr. Robert Bigley, Doug Myer,
Adam Norgaard, Jenny Norgaard, Kat Prickett

SERVANT STAGE STAFF

Johnathan Bauer	EXECUTIVE DIRECTOR	Caryn Rehm	EDUCATION & THEATRE ADMINISTRATOR
Wally Calderon	ARTISTIC DIRECTOR	Lauren Schaeffer	PROJECT MANAGER
Tyler Hoover	MANAGING DIRECTOR	Jim Bauer	BOOKKEEPING & DATABASE ADMINISTRATOR
Jenny Norgaard	TOURING & AUDIENCE SERVICES MANAGER		

A letter from the **Artistic Director.**

We tiptoed into 2021 with a great deal of uncertainty, but filled with hope. Our excitement to return to in-person meetings, auditions, classes, rehearsals, and performances was overwhelming, and as a company, we felt prepared to return to what we do best in an even stronger, more loving, and better-serving way. We began the season with an intimate and delightful production of *Daddy Long Legs*. It was the first time we opened our doors to audiences in over a year, and we were on our way back to the joy of live theatre. We followed with a staged reading of a brand new musical, *Prodigal*, giving our audiences a chance to see inside the creative process and continuing our initiative to foster and support new works. Summer saw the return of our postponed production of *Don't Rock the Jukebox*, an all-teen musical revue, as well as the much loved *Old-Time Gospel Radio Hour*, where we saw eager audiences fill many parks and other venues. In the fall, after several delays, we were finally able to perform a powerful concert adaptation of the Broadway musical *Amazing Grace*. We closed out the year with *Joy to the World*, a Christmas production filled with laughter, memories, and of course... joy. We were so incredibly fortunate to be able to make it through the year doing what we love while serving our community.

OUR TEAMS

Simply stated, our teams of gifted performers, designers, musicians, crews, and volunteers are among the best of the best. This year seemed to bring a rekindled appreciation for what we do as artists and why we love the arts. Our teams were ready to get back and do anything to make sure the "show went on". They were flexible, durable, hardworking, kind, filled with patience and grace, and amazing. I am so proud of what we collectively were able to accomplish this season, and it took every member of the Servant Stage family to make it happen.

OUR EDUCATIONAL THEATRE

One of the hardest hit parts of our company in 2020 was our youth theatre program, and time after time our hearts broke for our students. So it felt fitting that the first people we saw in person in 2021 were our teen performers, auditioning for our Teen and Apprentice Companies. 29 students ended up being selected to be a part of this program, and in September, we completed our second year of TeenCo and AppCo. We successfully completed four youth summer camps and I was thrilled to be able to bring in guest directors and choreographers for each of these productions. We were once again able to provide financial assistance to every student who needed it. In the summer, we also introduced a new educational program offering weekly classes for students of all ages, covering a variety of theatre topics, every Monday night from July to November.

OUR AUDIENCES

This year felt like a huge family reunion of sorts, bringing everyone back together again after missing them dearly. Our audiences didn't just come to see the shows, but came to share with us their stories from the past year. We laughed, cried, loved, and grieved with so many of our audience members upon hearing their stories. We also welcomed and met many new audience members who had only come to know us through our virtual performances, so it was wonderful to see so many new faces to Servant Stage.

OUR FUTURE

This year was a year to get back on track, and to resume what we have planned for the future of our company. As we closed out 2021, we felt ready to launch into our biggest season ever in 2022. The new year will bring one of our most exciting seasons to date and we are excited to share the Servant Stage experience with many new cast members, staff members, and audience members. And as always, we will continue to grow, to learn, to listen, and to serve, because Servant Stage truly is... all of us!



Wally Calderon
Artistic Director

Daddy Long Legs



Music & Lyrics by
Paul Gordon & John Caird

Live Performances
April 9-25

Available Online
April 23 - May 2

12 live performances at
The Junction Center

1,300+
in-person
attendees

We were thrilled to make our return to in-person performances in April with this delightful off-Broadway musical based on the classic novel. Featuring only two actors and a three-person pit orchestra, this heart-warming and intimate production was the perfect way to safely transition back to the wonderful world of live theatre. After more than a year of virtual performances and not being able to interact with our audience, it was a special and memorable experience for all involved to share this experience together!

I streamed Daddy Long Legs and have seen other Servant Stage shows both live and in person. The quality of the actors is always outstanding. The two that were in Daddy Long Legs were amazing and so suited to their parts! It was a joy to watch. I'm so thankful Lancaster County has this option to see such quality shows at such reasonable prices.

Bev Graybill
[Google Review](#)

How blessed I was to have seen Daddy Long Legs not once but TWICE during its recent run. I saw the show off-Broadway, and if I had to choose, I would EASILY choose yours. It was nothing short of BRILLIANT! The acting was absolutely first-rate, the staging delightfully simple, the pit and tech side of things, outstanding ... I just can't say enough good things about the production. And then to hear of your vision - to make theatre accessible to all - resonated so much with my own heart! Thank you - for your vision, your commitment to excellence, and your passion to bring the art of live theatre to everyone.

Scott Carter
[Audience Member](#)



4 live performances at
Lancaster Alliance Church

22
performers

660+
in-person
attendees

PRODIGAL

A MUSICAL ALLEGORY

Book, Music & Lyrics by
Tyler D. Hoover

Live Performances
May 21-23

Available Online
May 28 - June 13

Prodigal was Servant Stage's first staged reading of a brand new full-length musical. Written by composer and playwright, Tyler D. Hoover, this modern retelling of the Prodigal Son story set in 1930s New York featured a cast of 22 performers bringing this new show to life for the very first time! A talkback / Q&A was held after each performance with the show's creator.

A new musical is always a thing to embrace. But what most audiences see is only the finished product of what might be years of hard work by writers, lyricists, composers, designers, directors, producers, and many other people. It's rare for a production to allow a large audience a chance to see how a musical prepares for its later full scale production. Servant Stage in Lancaster isn't just any theater company, however. While its goal is to produce family friendly but intelligent fare, and to be affordable entertainment for everyone, it's not afraid to take some risks that some of the edgiest theater companies wouldn't try - and one of those risks is full-audience public workshops of its shows, including new productions that haven't come to published fruition yet. Such is the case with *PRODIGAL: A MUSICAL ALLEGORY* by the talented local artist Tyler D. Hoover.

Marakay Rogers
BroadwayWorld Review

DON'T ROCK THE JUKEBOX

4 live performances
across Lancaster County

36 performers
ages 12-19

1,300+
in-person attendees

Live Performances
June 25-27

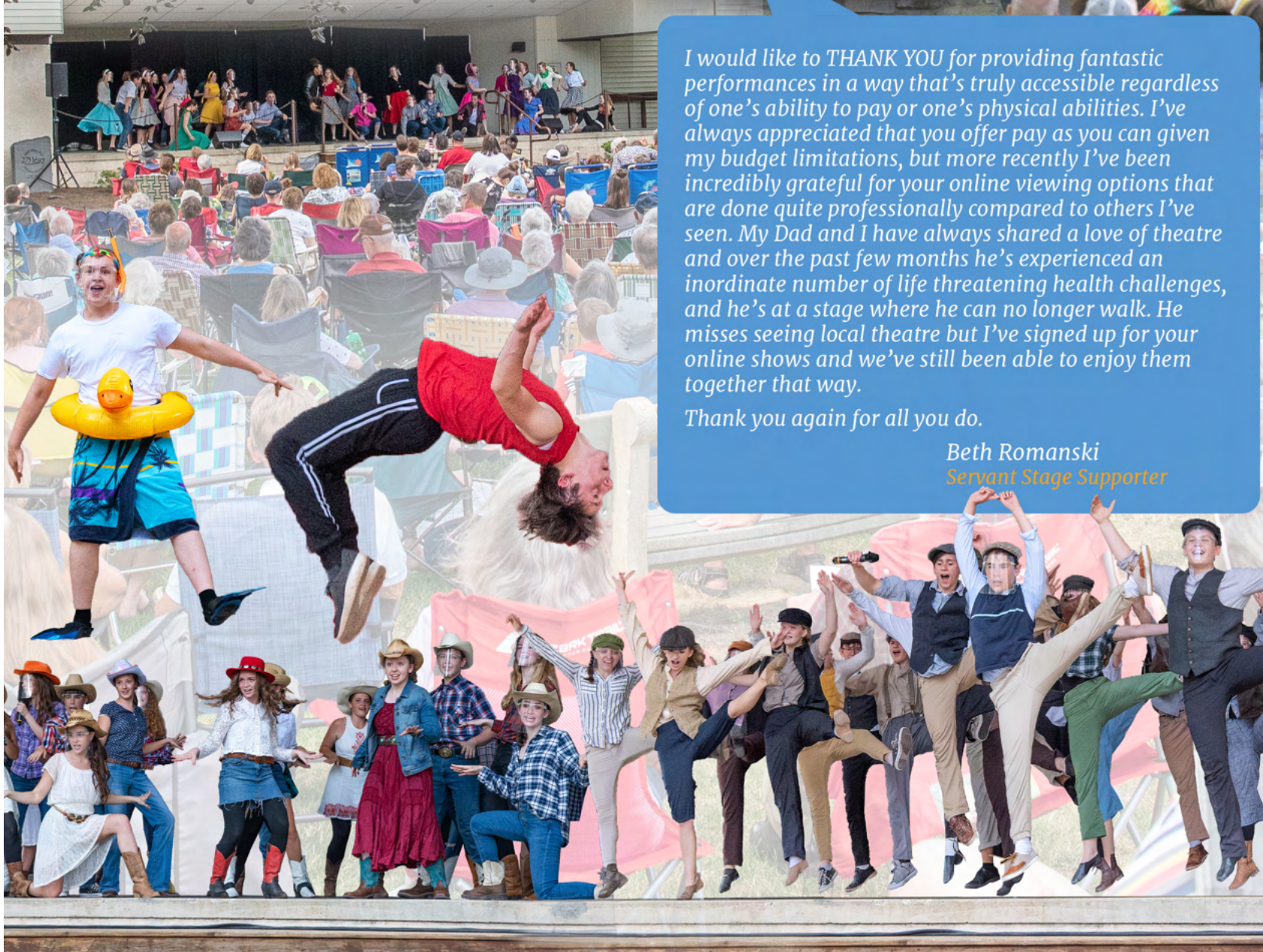
Available Online
July 9-25

After investing more than 60 hours of rehearsal in the Spring of 2020, the cast and production team of *Don't Rock The Jukebox* faced cancellation due to COVID-19. It was a joy to reunite much of the 2020 cast and add a number of new student performers to the show and present this high energy tour-de-force of popular music from across the decades at outdoor venues across Lancaster County including Lititz Springs Park, New Holland Park, and Clipper Magazine Stadium, as well as at Lancaster County Christian School.

I would like to THANK YOU for providing fantastic performances in a way that's truly accessible regardless of one's ability to pay or one's physical abilities. I've always appreciated that you offer pay as you can given my budget limitations, but more recently I've been incredibly grateful for your online viewing options that are done quite professionally compared to others I've seen. My Dad and I have always shared a love of theatre and over the past few months he's experienced an inordinate number of life threatening health challenges, and he's at a stage where he can no longer walk. He misses seeing local theatre but I've signed up for your online shows and we've still been able to enjoy them together that way.

Thank you again for all you do.

Beth Romanski
Servant Stage Supporter



13 live performances
across Lancaster County

39 performers

3,650+
in-person attendees



Live Performances
July 11 - August 11

Servant Stage's audience-favorite gospel music revue returned to the stage in 2021 with a new set of songs and cast of characters. Featuring a cast of nearly 40 local performers, including 23 student performers, *The Old-Time Gospel Radio Hour* toured to local parks, churches, and retirement communities.



A serious treat not only for gospel music lovers but for bluegrass fans and for Prairie Home Companion addicts.
Marakay Rogers
BroadwayWorld Review



175
student performers
ages 10-18

2,500+
audience
members

Once Upon A
Mattress

July 5-10



Disney
Aladdin
JR.

July 12-17



Disney
MOANA
JR.

July 26-31



Disney
HIGH
SCHOOL
MUSICAL
JR.

August 2-7



MONDAY NIGHT DROP-IN CLASSES

July–November

33 classes offered **109** students

16 professional instructors

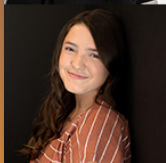
Following the success of our 2020 ConSERVANTory program, which offered group acting, singing, and dance lessons virtually to our community, we were thrilled to begin offering in-person, drop-in classes on Monday nights, with classes in various theatrical disciplines for students ages 6 and up! Following a successful first round of classes in July and August, we were thrilled to extend these classes through the end of November and look forward to classes beginning again in February 2022.



Teen & Apprentice Company

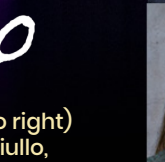
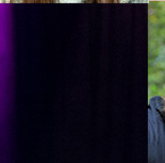
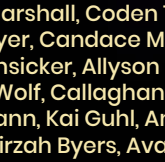
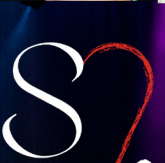
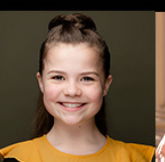
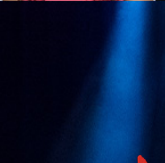
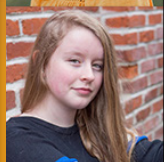
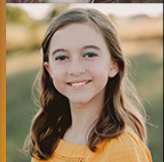
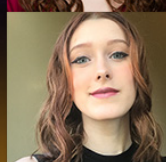
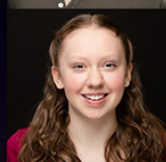
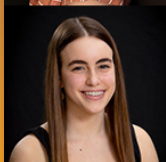
June – September

After holding our inaugural year of Teen Company (TeenCo) & Apprentice Company (AppCo) entirely online due to COVID, we were thrilled to be able to meet in-person this year. Twenty-nine incredibly talented students received weekly classes in acting, singing, and dancing from local and industry professionals from June thru September, culminating in a showcase performance for the public on September 19, 2021.



TeenCo

(clockwise bottom left to right)
Isabelle Olenik, McKenna Donaldson, Cora Cook, Reagan Connell, Anne Mollvaine, Riley Fidler, Tori Guhl, Brooklyn Hilton, Isabelle Titzer, Kayleigh Jarkowsky, Brady Norgaard, Sydney Norgaard, Riley Shroyer



AppCo

(clockwise bottom left to right)
Elle Herson, Elena DiSciullo, Malloree Marshall, Coden Tortolano, Tate Boyer, Candace Mbugua, Landon Hunsicker, Allyson Hunsicker, Christian Wolf, Callaghan Petrosky, Kacy Hartmann, Kai Guhl, Annika Locke, Abi Davis, Tirzah Byers, Ava Joy Munn



13
piece orchestra

6,200+
in-person
attendees

47
cast members

12
live performances at
Lancaster Bible College

Live Performances
October 1-17

Available Online
October 22 - November 4

Servant Stage was honored to be the first regional theatre company outside of Broadway and the National Tour to present the Broadway musical, *Amazing Grace*. Adapted into a 90-minute concert experience, in collaboration with the show's creator, Christopher G. Smith, *Amazing Grace* was a unique and overwhelmingly well-received adaptation, telling the true story of slave-trader-turned-abolitionist John Newton, whose life experiences led him to pen the famous hymn "Amazing Grace."

Amazing Grace was MOST EXCELLENT! It was a blessing to have the opportunity to experience such a powerful performance!

Most performances leave you heading home empty, or worse filled with despair, not Servant Stage.

Don Horst
Servant Stage Supporter

I'm honored to have Servant Stage presenting Amazing Grace. Just the name Servant Stage says exactly what I want to be in my life as a writer and entertainer. I want to serve the audience, and it is always a joy to work with other people like that. It's very rare and I'm very thankful for Servant Stage.

Christopher G. Smith
Amazing Grace Playwright & Composer

28 live performances across Lancaster County and beyond!

6,100+ in-person attendees

Joy TO THE WORLD

Live Performances
November 18 - December 19

Available Online
December 20 - January 2

Servant Stage's audience-favorite holiday revue returned to the stage in 2021 with 28 touring performances across Lancaster County and beyond! Featuring dozens of classic songs and carols, and tributes to many of the most beloved Christmas traditions, this original production traces the magic to its source - the Miracle of the Nativity.



The music was so uplifting with a terrific mix of traditional melodies. The colors in the costumes and set really ignited the Christmas excitement. Our residents felt happy, with a touch of normalcy, in going to a "live performance" once again. Your team's constant smiles touched everyone's hearts. It is amazing to see how one hour can truly lift someone from the feelings of loneliness. Being able to share a positive experience with friends is so important in healthy daily living. Residents have stopped in to see me reminiscing about a fun evening! This was a beautiful way to kick off our Christmas season.

Keep up your ministry of sharing your talents, skills, and excitement for the arts. It is really making a difference in so many people's lives throughout south central PA!

Mary Lee Harpel
Director of Resident Services
Londonderry Village

Streaming PRODUCTIONS

THE CIVIL WAR

THE BROADWAY MUSICAL

Available Online
January 22-31

28
performers

15
musicians

Servant Stage was honored to receive special permission from acclaimed Broadway composer Frank Wildhorn Jr. to combine footage from our 2017 production of his Broadway musical *The Civil War* with virtual performances recorded during quarantine. The result was an incredibly unique, immersive virtual theatre experience.



ONCE UPON A TIME

Premiered Online
March 12

27
student
performers

960
online views

Featuring the talents of 28 student performers ages 10-18, *Once Upon A Time* was a virtual, original concert-style show based on the magical world of fairy tales, superheroes, science fiction, and fantasy. This show was a fun creative challenge for our team and an opportunity for students to perform and have their talents made visible for the community during quarantine.

Financial STATEMENT

Servant Stage Company is carefully managed and has *never run a deficit since its creation, with a sustainable vision for the future to serve our community for generations to come.*

Our fiscal year closed on Dec. 31, 2021 with \$506,442 in assets (\$13,183 in equipment, \$493,259 in cash reserves, saving towards a future home for Servant Stage).

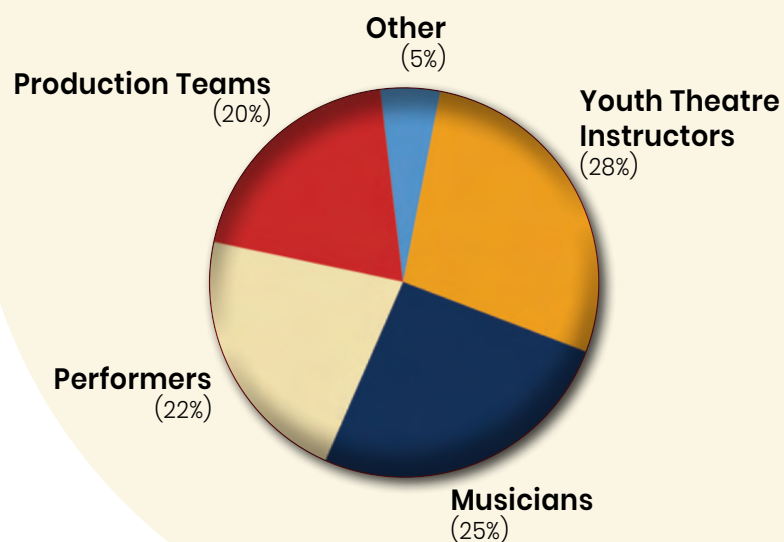
Operational Revenue

Individual Contributions	\$364,360
Business/Organization Contributions	\$11,075
Sponsorship Contributions	\$13,650
Education	\$48,735
Concessions & Merchandise	\$16,553
Grants	\$144,476
Other	\$5,828
Total Revenue:	\$604,677

Operational Expenses

Salaries	\$208,383
Independent Contractors	\$94,295
Occupancy	\$45,732
Marketing & Fundraising	\$32,537
Production Supplies	\$35,635
General expenses	\$36,334
Royalties	\$12,190
Total Expenses:	\$465,105

Though Servant Stage relies heavily on volunteers, whenever possible our goal is to offer stipends. In 2021, Servant Stage was able to offer **\$94,295 in stipends to 105 independent contractors**



A note from the Managing Director.

One of the hallmarks of Servant Stage has always been our touring performances into local retirement communities, churches, and other venues. Our teams have long been adept at tailoring our shows - sometimes "on the fly" - to suit the conditions of the venue or the specific group that we're serving. We've learned to plan scrupulously, prepare efficiently, and then hold all things loosely - quick to adjust whatever is necessary to serve as well as we possibly can. Little did we know how such routines would prepare us for 2021.

We entered the season very excited to resume live, in-person performances after a year of virtual performances due to quarantine. What a joy and thrill to be reunited again! But it wasn't always a smooth road. In a time when our differences as a society can be made to seem insurmountable, we believe - more than ever - that the arts provide a place of common ground where we can be inspired to better ourselves, to seek understanding and empathy, to have our worldviews constructively challenged, and to sometimes escape the stress of life and be reminded of all that is still good, beautiful and fun in the world. Thank you for playing a part in making this possible through your support. We look forward to all that's ahead as we strive to continue to safely provide outstanding musical and theatrical experiences to everyone in our community!



Tyler Hoover
Managing Director

SERVANT STAGE *Supporters*

\$4,000+

Anonymous (2)

Bruce & Carole Eberwein

Wayne & Robin Headman

Evelyn Hess

Jeffrey L. Wagner

(in memory of Dr. Clifford & Doris Wagner)

\$2,000+ FOUNDATION, ORGANIZATION & BUSINESS SPONSORS



The Voice of Christian Radio



Omar's Transport LLC

\$2,000-\$3,999

Anonymous (3)

Ed & Jackie Balderston

Glenn & Beth Cozzone

Kim Cummings

Bud & Carolyn Grier

Calvin & Janet High

Joanna Lucas

Walt & Sarah Styer

\$1,000-\$1,999 FOUNDATION, ORGANIZATION & BUSINESS SPONSORS



Cliff Mast & Shirley Mast, RN
Certified OPTAVIA Coaches™



Ephrata National Bank
...all the difference.



\$1,000-\$1,999

Anonymous (8)

Mark & Amy Ammann

J. Robert Arthur

Eileen & Jim Beccone

Dave & Paulie Bird

Gregory Scott Carter

Todd & Sarah Chamberlain

Jay & Sally Douglass

Bill & Doris Helie

Hank & Diane Herrmann

Gregg & Susan Kearney

Mike Kukich

Sundae A. Lausch

Robert & Judy Leaman

Kenneth & Gladys Martin

Harriet W. Maurer

Mardel Mellinger

Larry & Barbara Mentzer

Jim & Barb Orsag

Dr. Roger B. Petersen

Irwin & Susan Richman

Linda A. Scott

Scott & Nancy Silverstein

Bill Snyder

Bill & Rosalie Starr

Kathy Unangst

Fred & Lynette Waller

Dr. J. Calvin & Shirley Wenger

Wayne & Ruth West

Alan K. Wyand & Robert L. Shoener

Dick Yeskoo

\$250-\$999 FOUNDATION, ORGANIZATION, AND BUSINESS SPONSORS

The Ashland Foundation



SERVANT STAGE *Supporters*

\$500-\$999

Anonymous (12)
 Greg & Carole Adkins
 Chris & Rachel Backert
 Jeff & Dona Barrall
 Mark & Mandy Black
 Bob & Connie Brinton
 Roy & Ada Burkhart
 Eric Burkholder
 Joyce Calderon
 John L. Clark
 Douglas & Kathleen DeAngelis
 Marian Dickson
 Mary Ellen Donat
 Curt & Melissa Edwards
 Wendell Funk
 John & Ann Gibbel
 David & Elizabeth Givens
 Joshua Glacken & Elizabeth Rickard
 Don & Ginnie Good
 Michael Grabauskas
 Robert L. Grimes

Angie & Don Guhl
 Caleb Heckman
 Daureen L. Heffner
 Rick & Marcy High
 John & Shirley Hoffer
 Paul & Sylvia Hollinger
 David & Gwendolyn Horst
 Doreen Jacoby
 Miriam Leaman
 Gene & Rhoda Martin
 Henri & Kristina McVey
 Keith & Deborah Mink
 Paul & Gloria Nelson
 Nancy Jean & Michael Newcomer
 Sheri & Peter Niven
 Norgaard Family
 Larry & Darlene Pals
 Ken & Donna Patrick
 Fran & Sally Rapp
 Gloria Roberts
 Rick & Jessica Rodgers

\$250-\$499

Anonymous (19)
 Jerry & Fran Allwein
 Arne & Trinket Amalixsen
 Megan Ament
 Glenn & Sandra Bair
 Cecilia & Chad Bardone
 Pat & John Beamenderfer
 Ernie & Liane Beardsley
 Richard & Janis Bell
 Diane Brown
 Paul W. & Evelyn M. Brubaker
 Bruce & Judy
 Wally & Andrea Calderon
 Rob & Allie Calderon
 Marilyn D. Carrion
 Lisa Clark
 Stephanie Deppen

John & Janet Dorfler
 Ken & Janis Dougherty
 Charles & Lorraine Drost
 Bill & Karen Drury
 Marie Edwards
 Allen & Brenda Elson
 Rodney & Kirsten Eshleman
 Shirley Frankenfield
 Robert & Shirley Garrett
 Greg Gehman
 Lynne & Gene Graber
 David & Mona Graham
 Don & Marilyn Graybill
 David & Betty Hasiuk
 Pat Smedley & Bill Haynes
 Mr. & Mrs. David & Nancy Heintzelman

I was able to be a part of a youth camp and Servant Stage's Apprentice Company this year which were both amazing experiences. Right off the bat, it was such an encouraging and welcoming community of people. Being someone new to something like this can be very daunting, but it was such a unique atmosphere. I was able to learn so much from the leadership and other performers, and I just want to thank Servant Stage for making all of these opportunities possible for young performers like me!



Landon Hunsicker
 Servant Stage Youth Performer

Charles & Mary Rost
 John & Katherine Spear
 Marvin & Linda Stouffer
 David & Anne Marie Teply
 Sheila & George Violand
 David & Dolores Walker

Ivan & Nancy Wenger
 Dennis & Judy Wertz
 Janet Whary
 Al & Wendy Williams
 Randy & Margaret Williams
 Ruth S. Zimmerman

Having children who love the theater, it has been so meaningful to have a place like Servant Stage that offers wholesome, family-friendly productions that are absolutely amazing! I am incredibly blessed to be a part of the Servant Stage volunteer team as I always leave feeling encouraged and uplifted. I love being around people, helping them, and welcoming them to what will most definitely be an amazing show! I guess my favorite part is seeing the joy on guests' faces at the end of the show particularly those at retirement homes who otherwise may not be able to attend shows like this.



Stephanie Noll
 Servant Stage Volunteer

LaRue Helm
 Charles & Marion Hentz
 Carole & Marty Hermes
 Ken & Joanne Hess
 Marcia Hess
 Steve Hofmann
 Don & Jean Hoover
 Laurie Hoover
 Tyler & Sandra Hoover
 Julie Horst
 Louetta Hurst
 Dennis & Beth Jordan
 Nicole Julian
 Phil & Marian Kearney
 Dorothy & Michael Klase
 Ryan & Sandra Kreider
 Ned & Ilene Ladd
 Mary Ann Landis
 Keith & Ernestine Lehman
 Keith Lewis
 William & Lorraine Long
 Keith & Jennifer Mader
 Curt & Joanne Martin
 Dennis & Jeanne Martin
 Mel & Shirley Martin
 Jody Matz
 Carl & Marian Metzler
 Carol & Jim Miller
 J.M. Miller
 Earl Moyer
 Mark & Colleen Musselman
 Don & Blanche Myer
 Donald & Ilene Neaves
 David & Mary Newman
 Ira & Dorothy Nolt

Jay & Dawn Oberholtzer
 Art & Tina Petrosemolo
 John & Carol Piccolo
 Lloyd & Claudia Pickell
 Robert Power
 Tyler & Kat Prickett
 John D. Redcay
 Kitty & Grayson Redford
 Judi Reeder
 William Regitz
 Col. & Mrs. Paul Reid
 Shaun & Kayla Ressler
 Jerry & Rose Rineer
 Helen E. Rohrer
 Fran & Julie Rosario
 Dr. & Mrs. Frederick P. Sample
 Terry & Carol Sayer
 Ed & Annette Schopf
 Ron & Lynne Seamans
 Tim & Kathy Sheetz
 Muriel Slenker
 Janice Smith
 Norm & Kathy Smith
 Dave & Peggy Thomas
 Robert & Marilyn Tyson
 Richard Vanderberg
 Glenn & Gail Walz
 Linda Wanaselja
 Joan & Phil Weaver
 Stacey & Chuck Whisman
 Linda Whiteman
 Dallas & Diane Wolgemuth
 Doris Yoder

THE HISTORY OF *Servant Stage*

Servant Stage started with the simple mission to serve our community with the performing arts.

Beginning unofficially in 2011, Johnathan and Rebecca Bauer would get groups of friends together to rehearse and put on free performances for local retirement homes. In 2014, the Bauers decided to go full-time with the company and Servant Stage officially became a 501(c)(3) non-profit organization. With a mission to serve the community, both in the production process and the performance experience, Servant Stage was quickly and enthusiastically embraced by the community and began to grow.

By 2016, the need to expand the team was evident. Wally Calderon was brought on board as Artistic Director, followed shortly thereafter by Tyler Hoover as Managing Director. Servant Stage began offering Youth Theatre opportunities in addition to their MainStage shows, as well as multiple Broadway shows per year, growing the audience size by 72% in 2017 alone.

Over the next two years, Servant Stage once again broke records in nearly every category, including audience attendance, number of performances, and cast, crew, and volunteers. The Youth Theatre program expanded to four or more productions per year involving more than 200 students annually. Our staff expanded to add several new team members.

Despite significant challenges in 2020 due to COVID-19, Servant Stage saw continued growth in our youth education programs with the introduction of our Teen & Apprentice Companies and a massive leap in our online audience and engagement through our Living Room Concert Series.

2021 was a year of new beginnings as we slowly returned to the joy of live theatre. Servant Stage's mission of accessibility continued to reach toward everyone in our community, offering both live in-person productions and streaming online throughout the 2021 season.

We are thrilled and honored to present our 10th Anniversary Season in 2022, with a continually expanding Theatre Education program, original revue shows, our biggest Broadway production ever, and more!

The best is yet to come!

2011-2012

songs & scenes from
gilbert & sullivan

yankee doodle dandy:
music of america

some enchanted evening:
classic love songs

do you hear the people sing:
songs of broadway

great american
songbook

amazing grace:
songs of faith

can you feel the love tonight:
music of disney

2013

2014



2015



2016

2017



2018



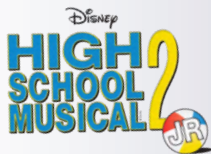
2019



2020



2021



2022





INSPIRE • EDUCATE • CHALLENGE • ENTERTAIN
SERVANTSTAGE.ORG | 717.455.0255